

## METAL SOLUTIONS

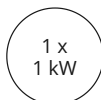
# EOS M 400

- Increased productivity thanks to 1000-watt laser power
- Modular platform with process and set-up station
- Build volume of 400 x 400 x 400 mm



## EXPOSURE MODULE

### LASERS



The precise Yb fiber lasers with their fixed focus expose a square 400 x 400 mm area.

## SOFTWARE



### EOS BUILD / BUILD+

EOS Build subscriptions offer enhanced EOSPRINT features for multiple users with flexible material management; Build+ adds more licenses, advanced materials, and training for up to 5 users.



### EOS DATA INSIGHTS

Data Insights offers unparalleled insights into machine performance — either individually or as a whole park of devices.



### EOS SYSTEM SUITE

EOS System Suite optimizes production by streamlining processes, integrating with MES and shop-floor IT systems, and generating detailed quality reports.



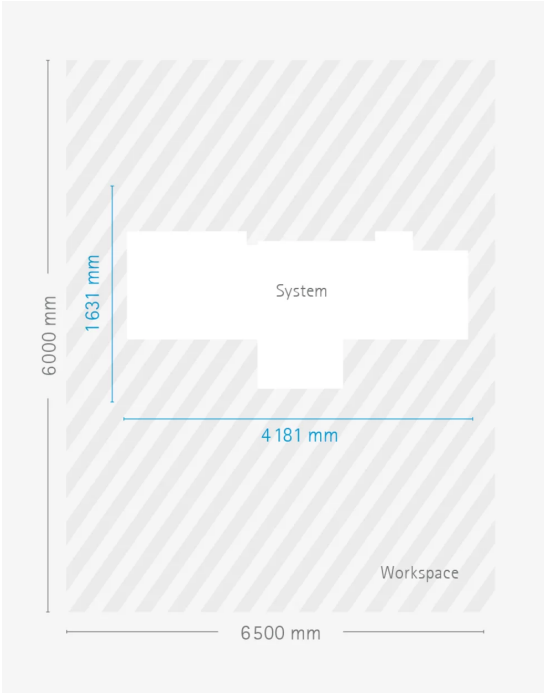
EOS M 400

## TECHNICAL DATA

<b>BUILD VOLUME</b>	400 x 400 x 400* mm (15.7 x 15.7 x 15.7 in)
<b>LASER TYPE</b>	Yb-fiber laser; 1 x 1000 W
<b>PRECISION OPTICS</b>	1 F-theta-lens(es); 1 High-speed scanner(s)
<b>SCAN SPEED</b>	up to 7.0 m/s (23.0 ft/s)
<b>FOCUS DIAMETER</b>	approx. 90 µm (0.00354 in)
<b>POWER SUPPLY</b>	1 x 50 A
<b>POWER CONSUMPTION</b>	max. 50.2 kW / typical 16.2 kW
<b>COMPRESSED AIR SUPPLY</b>	7 Bar; 20 m³/h (102 psi; 706 ft³/h)

\* Height includes build plate

# DIMENSIONS & WEIGHT



## EOS M 400 with IPM M Setup Station L

Height: 2,340 mm / Weight approx. 4,635 kg



## EOS M 400

EOS Aluminium AlF357



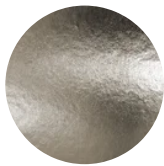
EOS Aluminium AlSi10Mg



EOS Aluminium Al2139 AM



EOS CopperAlloy CuNi30



EOS CopperAlloy CuCrZr



EOS MaragingSteel MS1



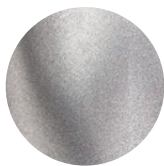
EOS NickelAlloy IN718



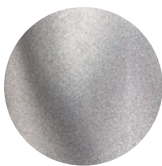
EOS StainlessSteel 316L



EOS Titanium Ti64



EOS Titanium Ti64ELI



# OPTIONAL ACCESSORIES



## IPCM M Extra

Manual and flexible powder handling

## HEADQUARTERS

**EOS GmbH**  
**Electro Optical Systems**

Robert-Stirling-Ring 1  
82152 Krailling / Munich  
Germany

Tel.: +49 89 893 36-0  
Email: [info@eos.info](mailto:info@eos.info)  
URL: [www.eos.info](http://www.eos.info)

Status as of 03.09.2024. Subject to technical modifications. EOS is certified according to ISO 9001.

EOS®, Additive Minds® Alumide®, AMQ®, CarbonMide®, DirectMetal®, DMLS®, EOSAME®, EOSINT®, EOSIZE®, EOSPACE®, EOSPRINT®, EOSTATE®, EOSTYLE®, FORMIGA®, LaserProFusion®, PA 2200®, PrimeCast® and PrimePart® are registered trademarks of EOS GmbH Electro Optical Systems in some countries. For more information visit [www.eos.info/trademarks](http://www.eos.info/trademarks).