

## METAL SOLUTIONS

# EOS M 300-4

- **Boost Your Productivity:** Versatile lasers, different automation options, and an adaptable design add up to game-changing productivity gains.
- **Consistent Quality:** Exceptional performance and stability to consistently deliver high-quality components at a reduced cost per part.
- **Designed to Grow:** The EOS M 300-4 platform offers the flexibility to easily ramp-up as your production demand increases.



## EXPOSURE MODULE

### LASERS

4 x  
400 W

4 precise lasers expose in a 300 x 300mm square with each laser covering the entire area.

## SOFTWARE



### EOS BUILD / BUILD+

EOS Build subscriptions offer enhanced EOSPRINT features for multiple users with flexible material management; Build+ adds more licenses, advanced materials, and training for up to 5 users.



### EOS SMART MONITORING

EOS Smart Monitoring utilizes Exposure OT for comprehensive build monitoring and pairs it with Smart Fusion to regulate heat within set parameters in collaboration with EOS Build/Build+.



### EOS DATA INSIGHTS

Data Insights offers unparalleled insights into machine performance — either individually or as a whole park of devices.



### EOS SYSTEM SUITE

EOS System Suite optimizes production by streamlining processes, integrating with MES and shop-floor IT systems, and generating detailed quality reports.



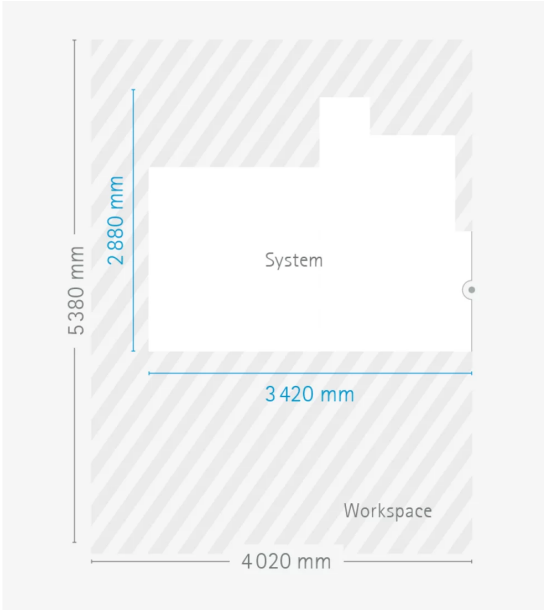
EOS M 300-4

## TECHNICAL DATA

BUILD VOLUME	300 x 300 x 400* mm (11.8 x 11.8 x 15.7 in)
LASER TYPE	Yb-fiber laser; 4 x 400 W
PRECISION OPTICS	4 F-theta-lens(es); 4 High-speed scanner(s)
SCAN SPEED	up to 7.0 m/s (23.0 ft/s)
FOCUS DIAMETER	approx. 100 µm (0.00394 in)
POWER CONSUMPTION	max. 19.6 kW / typical 16.0 kW
COMPRESSED AIR SUPPLY	7 Bar; 15 m³/h (102 psi; 530 ft³/h)

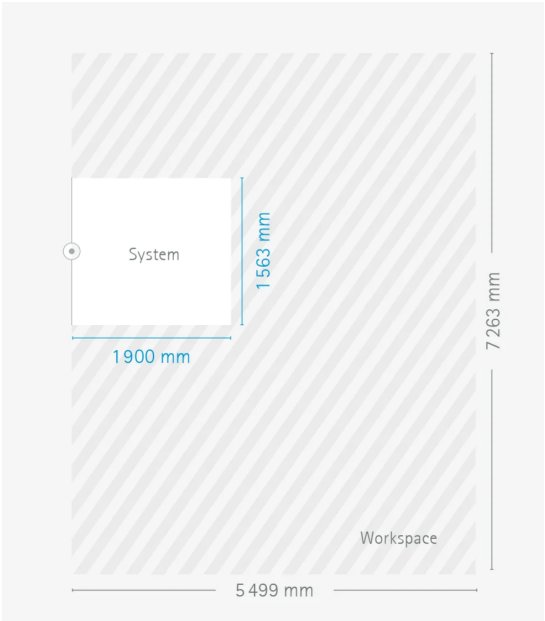
\* Height includes build plate

# DIMENSIONS & WEIGHT



## EOS M 300-4 with Flex Dispenser

Height: 2,340 mm / Weight approx. 6,600 kg



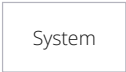
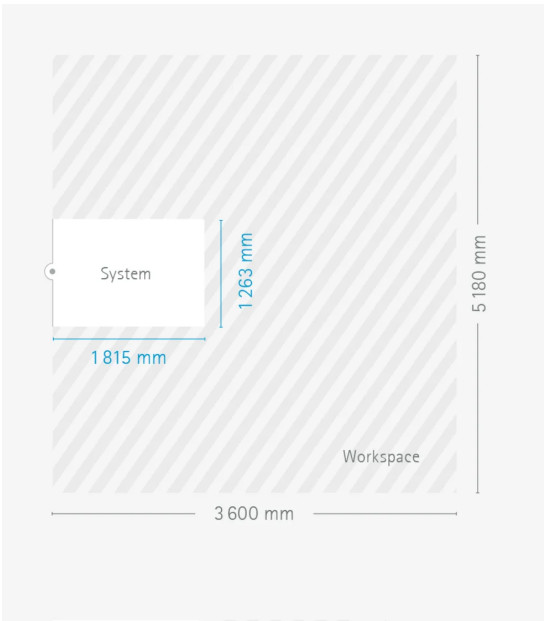
## EOS Transfer Station M

Height: 1,300 mm / Weight approx. 1,000 kg



IPM M Setup Station M\*

Height: 2,000 mm / Weight approx. 1,400 kg



EOS M 300-4

EOS Aluminium AlSi10Mg



EOS CobaltChrome MP1



EOS MaragingSteel MS1



EOS NickelAlloy IN625



EOS NickelAlloy IN718



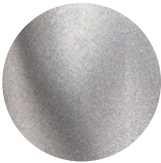
EOS StainlessSteel 17-4PH



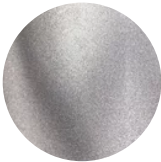
EOS StainlessSteel 316L



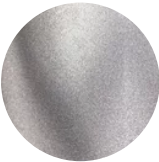
EOS Titanium Ti64



EOS Titanium Ti64 Grade 23



EOS Titanium Ti64 Grade 5

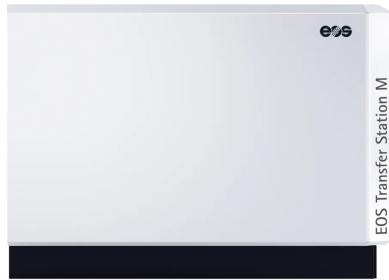


# OPTIONAL ACCESSORIES



## IPCM M Extra

Manual and flexible powder handling



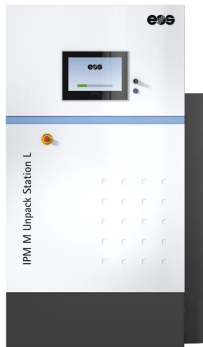
## EOS Transfer Station M

Fast switch over of the exchangeable frame



## IPM M Setup Station M

Comfortable gas-tight unpacking from two sides and under inert gas



## Unpack Module

Automated unpacking and easy integration in the IPM M Setup Station M

## HEADQUARTERS

**EOS GmbH**  
**Electro Optical Systems**

Robert-Stirling-Ring 1  
82152 Krailling / Munich  
Germany

Tel.: +49 89 893 36-0  
Email: [info@eos.info](mailto:info@eos.info)  
URL: [www.eos.info](http://www.eos.info)

Status as of 03.09.2024. Subject to technical modifications. EOS is certified according to ISO 9001.

EOS®, Additive Minds® Alumide®, AMQ®, CarbonMide®, DirectMetal®, DMLS®, EOSAME®, EOSINT®, EOSIZE®, EOSPACE®, EOSPRINT®, EOSTATE®, EOSTYLE®, FORMIGA®, LaserProFusion®, PA 2200®, PrimeCast® and PrimePart® are registered trademarks of EOS GmbH Electro Optical Systems in some countries. For more information visit [www.eos.info/trademarks](http://www.eos.info/trademarks).