

METAL SOLUTIONS

EOS M 290

- **Repeatable Excellence:** Exceptional laser quality and detail resolution ensure repeatable results – even for highly complex parts – every single time.
- **Material Versatility:** With the widest range of validated materials and processes available on the market, all your needs are covered.
- **From Start to Part Fast:** The EOS M 290 allows fast, flexible, dependable, and cost-effective production of metal parts directly from CAD data.



EXPOSURE MODULE

LASERS

1 x
400 W

Up to two precise lasers expose in a 250 x 250mm square with different optics to choose from and Pulse Modulation enabled.

SOFTWARE



EOS BUILD / BUILD+

EOS Build subscriptions offer enhanced EOSPRINT features for multiple users with flexible material management; Build+ adds more licenses, advanced materials, and training for up to 5 users.



EOS SMART MONITORING

EOS Smart Monitoring utilizes Exposure OT for comprehensive build monitoring and pairs it with Smart Fusion to regulate heat within set parameters in collaboration with EOS Build/Build+.



EOS DATA INSIGHTS

Data Insights offers unparalleled insights into machine performance — either individually or as a whole park of devices.



EOS SYSTEM SUITE

EOS System Suite optimizes production by streamlining processes, integrating with MES and shop-floor IT systems, and generating detailed quality reports.



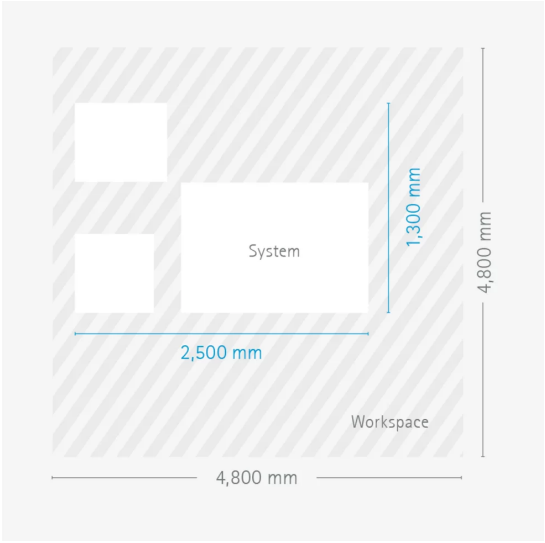
EOS M 290

TECHNICAL DATA

BUILD VOLUME	250 x 250 x 325* mm (9.8 x 9.8 x 12.8 in)
LASER TYPE	Yb-fiber laser; 1 x 400 W
PRECISION OPTICS	1 F-theta-lens(es); 1 High-speed scanner(s)
SCAN SPEED	up to 7.0 m/s (23.0 ft./sec)
FOCUS DIAMETER	approx. 100 µm (0.00394 in)
POWER SUPPLY	1 x 32 A
POWER CONSUMPTION	max. 8.5 kW / typical 2.4 kW
COMPRESSED AIR SUPPLY	7 Bar; 20 m³/h (102 psi; 706 ft³/h)

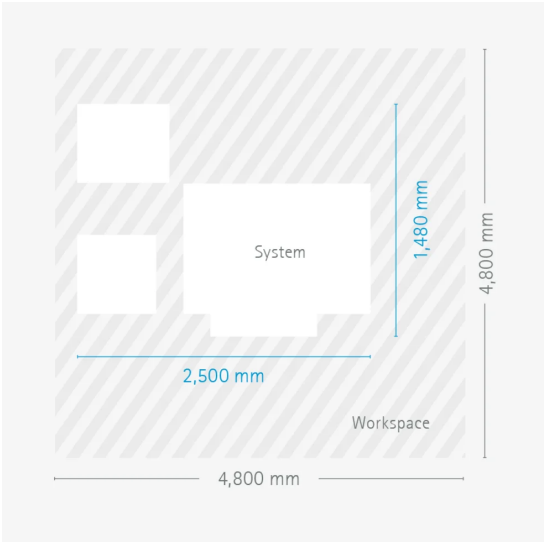
* Height includes build plate

DIMENSIONS & WEIGHT



EOS M 290

Height: 2.190 mm / Weight approx. 1.250 kg



EOS M 290 with Comfort Powder Module

Height: 2.190 mm / Weight approx. 1.250 kg



EOS M 290

EOS Aluminium Al5X1



EOS Aluminium AlF357



EOS Aluminium AlSi10Mg



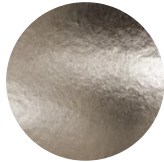
EOS Aluminium Al2139 AM



EOS CaseHardeningSteel
20MnCr5



EOS Cobalt Chrome MP1



EOS Copper Cu



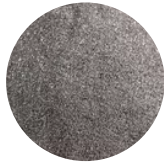
EOS MaragingSteel MS1



EOS NickelAlloy HAYNES® 282®



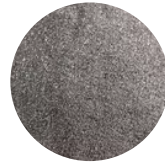
EOS NickelAlloy HX



EOS NickelAlloy IN625



EOS NickelAlloy IN718



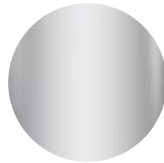
EOS NickelAlloy IN939



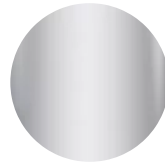
EOS StainlessSteel 17-4PH



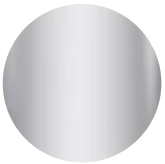
EOS StainlessSteel 254



EOS StainlessSteel 316L



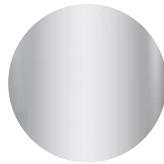
EOS StainlessSteel CX



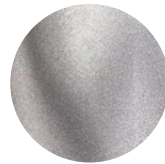
EOS StainlessSteel PH1



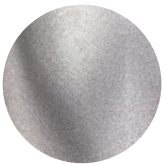
EOS StainlessSteel SuperDuplex



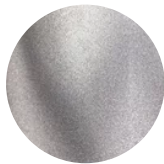
EOS Titanium Ti64



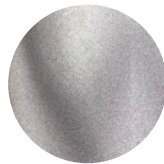
EOS Titanium Ti64 Grade 23



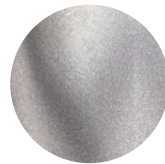
EOS Titanium Ti64 Grade 5



EOS Titanium Ti64ELI



EOS Titanium TiCP Grade 2



EOS ToolSteel 1.2709



EOS ToolSteel CM55



OPTIONAL ACCESSORIES



IPC M Extra

Manual and flexible powder handling



IPC M Pro

Semi-automated powder handling



Comfort Powder Module

Safe handling of powder inside the process chamber

HEADQUARTERS

EOS GmbH
Electro Optical Systems

Robert-Stirling-Ring 1
82152 Krailling / Munich
Germany

Tel.: +49 89 893 36-0
Email: info@eos.info
URL: www.eos.info

Status as of 13.02.2024. Subject to technical modifications. EOS is certified according to ISO 9001.

EOS®, Additive Minds® Alumide®, AMQ®, CarbonMide®, DirectMetal®, DMLS®, EOSAME®, EOSINT®, EOSIZE®, EOSPACE®, EOSPRINT®, EOSTATE®, EOSTYLE®, FORMIGA®, LaserProFusion®, PA 2200®, PrimeCast® and PrimePart® are registered trademarks of EOS GmbH Electro Optical Systems in some countries. For more information visit www.eos.info/trademarks.