

METAL SOLUTIONS

EOS M 290-2

- Dual 400 W lasers offer full-field overlap and quality consistent to legacy single-field system
- Increase in productivity with faster printing in the build space
- Ideal for utilization across a wide range of applications

*System available in Q4/2024



EXPOSURE MODULE

LASERS





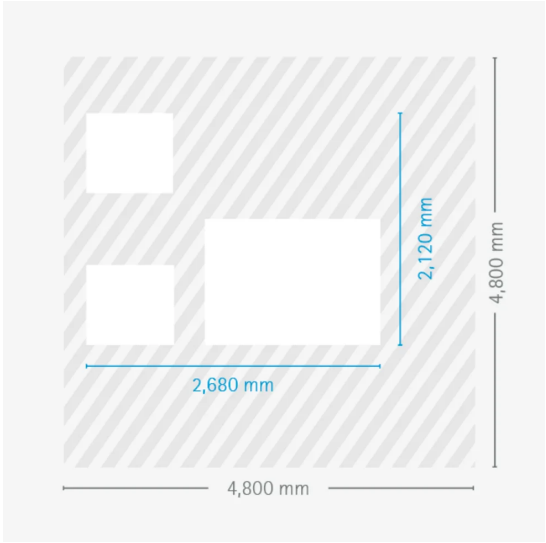
EOS M 290-2

TECHNICAL DATA

BUILD VOLUME	250 x 250 x 325* mm (9.8 x 9.8 x 12.8 in)
LASER TYPE	Yb-fiber laser; 2 x 400 W
PRECISION OPTICS	2 F-theta-lens(es); 2 High-speed scanner(s)
SCAN SPEED	up to 7.0 m/s (23.0 ft/s)
FOCUS DIAMETER	approx. 85 µm (0.00335 in)
POWER SUPPLY	1 x 32 A
POWER CONSUMPTION	max. 15.0 kW / typical 15.0 kW
COMPRESSED AIR SUPPLY	7 Bar; 20 m³/h (102 psi; 706 ft³/h)

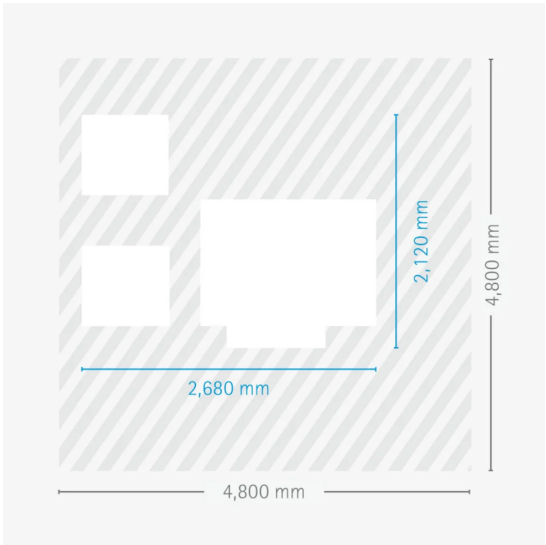
* Height includes build plate

DIMENSIONS & WEIGHT



EOS M 290-2

Height: 2,400 mm / Weight approx. 1,350 kg



EOS M 290-2 with Comfort Powder Module

Height: 2,400 mm / Weight approx. 1,350 kg



EOS M 290-2

EOS Aluminium AlSi10Mg



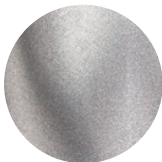
EOS StainlessSteel 316L



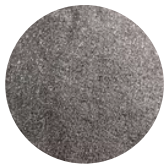
EOS NickelAlloy IN625



EOS Titanium Ti64



EOS NickelAlloy IN718



EOS StainlessSteel 17-4PH



OPTIONAL ACCESSORIES



IPCM M Extra

Manual and flexible powder handling



Comfort Powder Module

Safe handling of powder inside the process chamber

HEADQUARTERS

EOS GmbH
Electro Optical Systems

Robert-Stirling-Ring 1
82152 Krailling / Munich
Germany

Tel.: +49 89 893 36-0
Email: info@eos.info
URL: www.eos.info

Status as of 05.08.2024. Subject to technical modifications. EOS is certified according to ISO 9001.

EOS®, Additive Minds® Alumide®, AMQ®, CarbonMide®, DirectMetal®, DMLS®, EOSAME®, EOSINT®, EOSIZE®, EOSPACE®, EOSPRINT®, EOSTATE®, EOSTYLE®, FORMIGA®, LaserProFusion®, PA 2200®, PrimeCast® and PrimePart® are registered trademarks of EOS GmbH Electro Optical Systems in some countries. For more information visit www.eos.info/trademarks.