

## METAL SOLUTIONS

# EOS NickelAlloy IN625

## Material Data Sheet

### EOS NICKELALLOY IN625

Parts built from EOS NickelAlloy IN625 have chemical composition corresponding to UNS N06625, AMS 5666F, AMS 5599G, W.Nr 2.4856, DIN NiCr22Mo9Nb. This type of alloy is characterized by having high tensile, creep and rupture strength. Conventionally cast or wrought components in this type of nickel alloy have typically excellent fatigue and thermal-fatigue properties combined with good oxidation resistance. EOS NickelAlloy IN625 is expected to have good corrosion resistance in various corrosive environments. Especially sea-water applications require high pitting and crevice corrosion resistance, stress-corrosion resistance against chloride-ions, high tensile and corrosion-fatigue strength. However, corrosion resistance has not been verified yet and therefore it is recommended to conduct relevant corrosion tests and studies prior to use in specific corrosive environment. Parts built from EOS NickelAlloy IN625 can be heat treated and material properties can be varied within specified range. Parts can be machined, spark-eroded, welded, micro shot-peened, polished and coated in both as-built and in heat-treated conditions. Due to the layerwise building method, the parts have certain anisotropy.

### MAIN CHARACTERISTICS

- High tensile, creep and rupture strength
- Heat and corrosion resistant
- Chemical composition corresponding to UNSN06625, AMS 5666F, AMS 5599G

### TYPICAL APPLICATIONS

- Racing applications
- Gas turbines in aerospace and energy
- Ship building industry

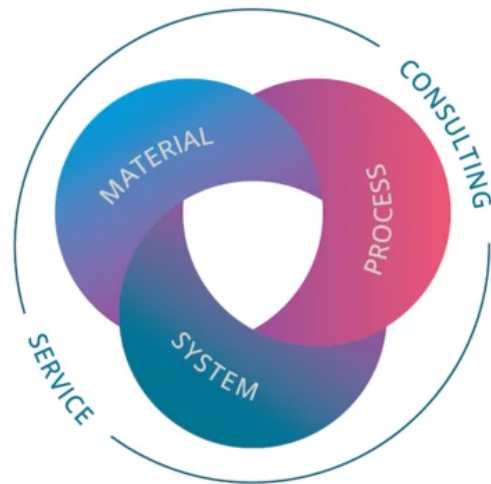
# The EOS Quality Triangle

EOS uses an approach that is unique in the AM industry, taking each of the three central technical elements of the production process into account: the system, the material and the process. The data resulting from each combination is assigned a Technology Readiness Level (TRL) which makes the expected performance and production capability of the solution transparent.

EOS incorporates these TRLs into the following two categories:

- Premium products (TRL 7-9): offer highly validated data, proven capability and reproducible part properties.
- Core products (TRL 3 and 5): enable early customer access to newest technology still under development and are therefore less mature with less data.

All of the data stated in this material data sheet is produced according to EOS Quality Management System and international standards



# POWDER PROPERTIES

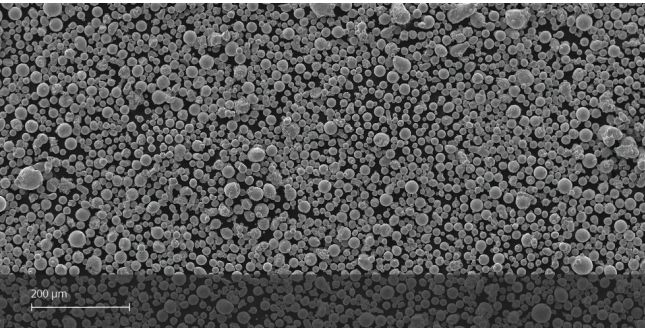
EOS NickelAlloy IN625 chemical composition is corresponding to UNS N06625, AMS 5666F, AMS 5599G, W.Nr 2.4856, DIN NiCr22Mo9Nb.

## Powder Chemical Composition (wt.-%)

Element	Min.	Max.
Cr	20	23
Mo	8	10
Nb	3.15	4.15
Fe	-	5
Ti	-	0.4
Al	-	0.4
Co	-	1
Si	-	0.5
Mn	-	0.5
C	-	0.1
Ta	-	0.05
P	-	0.015
S	-	0.015
Ni	Balance	

## Powder Particle Size

GENERIC PARTICLE SIZE DISTRIBUTION	15 - 65 µm
------------------------------------	------------



# HEAT TREATMENT

## Steps

Anneal at 870 °C (1600 °F) for 1 hour, rapid cooling.

## HEADQUARTERS

**EOS GmbH**  
**Electro Optical Systems**

Robert-Stirling-Ring 1  
82152 Krailling / Munich  
Germany

Tel.: +49 89 893 36-0  
Email: [info@eos.info](mailto:info@eos.info)  
URL: [www.eos.info](http://www.eos.info)

---

This powder has not been developed, tested or certified as a medical device according to Directive 93/42/EEC (MDD) or Regulation (EU) 2017/745 (MDR) and is not intended to be used as a medical device, in particular for the purposes specified in Art. 2 No. 1 MDR. Insofar as you intend to use the powder as raw material for the manufacture of pharmaceutical products or medical devices (e.g. as raw material which as a material must meet the requirements of Annex 1, Chapter II MDR), the responsibility and liability for all analyses, tests, evaluations, procedures, risk assessments, conformity assessments, approval and certification procedures as well as for all other official and regulatory measures required for this purpose shall lie solely with you both with regard to the pharmaceutical product and/or medical device manufactured by you and with regard to the properties, suitability, testing, evaluation, risk assessment, other requirements for use of the powder as raw material. In this respect, the limitations of liability pursuant to our General Terms and Conditions and the system sales or material contracts shall apply.

**Part properties are provided for information purposes only and EOS makes no representation or warranty, and disclaims any liability, with respect to actual part properties achieved.** Part properties are dependent on a variety of influencing factors and therefore, actual part properties achieved by the user may deviate from the information stated herein. This document does not on its own represent a sufficient basis for any part design, neither does it provide any agreement or guarantee about the specific properties of a material or part or the suitability of a material or a part for a specific application.

**The achievement of certain part properties as well as the assessment of the suitability of this material for a specific purpose is the sole responsibility of the user. Any information given herein is subject to change without notice.**

---

Status as of 03.09.2024. Subject to technical modifications. EOS is certified according to ISO 9001.

EOS®, Additive Minds®, Alumide®, AMQ®, CarbonMide®, DirectMetal®, DMLS®, EOSAME®, EOSINT®, EOSIZE®, EOSPACE®, EOSPRINT®, EOSTATE®, EOSTYLE®, FORMIGA®, LaserProFusion®, PA 2200®, PrimeCast® and PrimePart® are registered trademarks of EOS GmbH Electro Optical Systems in some countries. For more information visit [www.eos.info/trademarks](http://www.eos.info/trademarks).